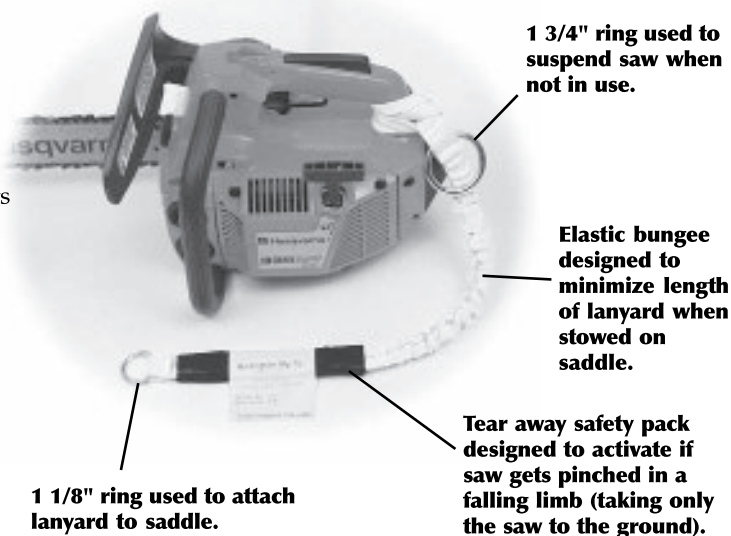


Tear Away Bungee Chainsaw Lanyard (Patented)

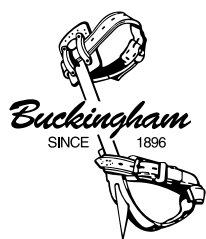
The Buckingham Tear Away Chainsaw Lanyard with the built-in bungee is designed for safety and convenience. It is constructed with a tear away safety pack that activates when 200 lbs. of force is applied. This feature eliminates the possibility of the user being pulled out of a tree if the saw gets hung up on a falling limb. It measures up to 50" fully extended to provide ample reach when cutting, but with the elastic bungee contracts to 32" when relaxed. This greatly reduces the possibility of getting tangled when climbing or working aloft. The saw, if dropped will fall below the user's feet without falling to the ground. To use, simply half hitch lanyard to the handle of the chainsaw, and attach to climbing saddle using a 1 1/8" steel ring, #2 bronze snap or 3/4" diameter loop. A 1 3/4" steel ring is used to suspend the chainsaw when not in use. Available in black or easy-to-see Hi-Vis Neon Yellow.

25Y12-46A



ARBORIST EQUIPMENT

NOT TO BE USED WITH SAWS EXCEEDING 15 LBS. IN WEIGHT.



"Suspended on saddle."



"Fully stretched and ready to cut."



"Saddle attachment options."

No. Prefix	Chainsaw End	Saddle End	Total Length (Fully Stretched)	Options
25B = Black	1 = 6" Nylon Loop w/ twist half hitch to saw handle	2 = 1 1/8" Steel Ring	42"	A = 1 3/4" diameter steel ring to suspend saw when not in use
25Y = Hi-Vis Yellow		3 = #2 Bronze Boat Snap	44"	
		4 = 3/4" Diameter Loop	46"	
			48"	
			50"	

Accessory Straps

Accessory straps are very handy and have multiple uses. They are made with 1" nylon and are available in 12" and 18" lengths. They come standard with either a #2 bronze snap or 1 1/8" steel ring. Handy for stowing a chainsaw, or adding attachments on a saddle. Available in black, fluorescent green, orange and pink. For 18" lengths add 18 to suffix (i.e. 60003-18G)

- 60002 12" Strap w/Ring black
- 60003 12" Strap w/Snap black
- 60002-G 12" Strap w/Ring green
- 60003-G 12" Strap w/Snap green
- 60002-O 12" Strap w/Ring orange
- 60003-O 12" Strap w/Snap orange
- 60002-P 12" Strap w/Ring pink
- 60003-P 12" Strap w/Snap pink



60002-G
60003-P

30 Travis Avenue, PO Box 1690, Binghamton, NY 13902-1690
Phone 607-773-2405 • Fax 607-773-2414 • www.linemenssupply.com